

RECALL BULLETIN 05V-262 (Rev. A)

DATE: OCTOBER 7, 2005
 MODEL YEAR: 1999 thru Early Production 2002
 CHASSIS MODEL: UD1200/UD1400
 BULLETIN NUMBER: SC-262
FILE IN THE ELECTRICAL SECTION OF THE TECHNICAL BULLETIN BINDER
 (Discard previous Recall Bulletin dated September 12, 2005)

**VOLUNTARY SAFETY RECALL CAMPAIGN NUMBER 05V-262:
 BATTERY CABLE INSPECTION AND/OR REPLACEMENT**

MODELS AFFECTED

1999-2001 Model Year UD1200 and UD1400 and early production 2002 UD1200 model vehicles produced between August 1998 and May 1, 2001. These vehicles are listed below by model and vehicle identification number. Each dealer will receive a computer listing for affected vehicles that are in their unsold inventory or that have been retail delivered.

Year	Model	Starting Sequence	Thru	Ending Sequence
1999	UD1200	JNAUXV1J2XA300101		JNAUXV1J5XG300235
		JNAUXV1J9XA400101		JNAUXV1J2XG400616
		JNAUXV1J5XA500101		JNAUXV1J8XG500316
	UD1400	JNAUZV1J7XA350101		JNAUZV1JXXG350171
		JNAUZV1J3XA450101		JNAUZV1J9XG450486
		JNAUZV1JXXA550101		JNAUZV1J5XG550312
2000	UD1200	JNAUXV1J5YG301001		JNAUXV1J8YA301061
		JNAUXV1J1YG401001		JNAUXV1J7YA401698
		JNAUXV1J8YG501001		JNAUXV1J4YA501192
	UD1400	JNAUZV1JXYG351001		JNAUZV1J5YA351149
		JNAUZV1J6YG451001		JNAUZV1J5YA451607
		JNAUZV1J2YG551001		JNAUZV1J4YA551228
2001	UD1200	JNAUXU1J61A302001		JNAUXU1J61A302029
		JNAUXU1J21A402001		JNAUXV1JX1A402107
		JNAUXU1J91A502001		JNAUXU1J21A502065
	UD1400	JNAUZU1J01A352001		JNAUZV1J71A352020
		JNAUZV1JX1A452001		JNAUZV1J61A452061
		JNAUZU1J31A552001		JNAUZU1J91A552102
2002	UD1200	JNAUXV1J12A303001		JNAUXV1J32A303002
		JNAUXV1J82A403001		JNAUXV1JX2A403002

DESCRIPTION

The possibility exists that the positive battery cable between the battery and the starter motor may be damaged or shorted to ground against the edge of the rear transmission support bracket and/or the edge of the 3rd frame cross member. Shorting of the positive battery cable to ground will rapidly discharge the batteries resulting in a no-start condition and could possibly cause a vehicle fire from overheating and melting of battery cable insulation or the corrugated protective conduit.

Repairs to correct this condition consist of the following:

1999 ~ 2000 MY UD1200 and UD1400

Inspect the battery cable routing and reroute the cable correctly as required. Replace the battery cable if damaged as evidenced by wear through of the corrugated protective conduit at the rear transmission mounting bracket or against the edge of the 3rd frame crossmember. Install a protective foam sleeve around the battery cable and an edge guard on the 3rd frame cross member.

2001 MY UD1200 and UD1400 ~ Early Production 2002 MY UD1200

Inspect the battery cable corrugated protective conduit at the rear transmission mounting bracket and at the 3rd frame cross member support for rub through damage. Replace the battery cable if the conduit is worn through. Install a protective foam sleeve around the battery cable and an edge guard on the 3rd frame cross member.

Owners of the involved vehicles will be notified by certified mail and instructed to schedule an appointment with an authorized UD Truck Dealer to have this Safety Recall performed. This repair will be made free of charge to the UD Truck Customer.

The National Highway Traffic Safety Administration has assigned the identification number 05V-262 to this Safety Recall. This number must appear on all communications and documentation of any nature that refer to the campaign described in this bulletin.

ADMINISTRATION / DEALER RESPONSIBILITY

Proceed immediately to make the necessary inspection and repairs to the involved vehicles in unsold dealer inventory. **All inventory vehicles (new or used) subject to this recall must be corrected prior to sale, transfer or delivery.** Each dealer will receive a computer listing of all involved vehicle identification numbers in unsold (new) inventory or that have been retail delivered. With this computer listing, the dealer will also receive an "Authorization for Recall Notification Service" card for all unsold or undelivered (new) inventory vehicles. This postage pre-paid card must be filled out correctly and returned to the address on the card indicating whether the vehicle was repaired, transferred, sold, etc. (refer to the UD Warranty Policies & Procedures Manual, Part III, Section 1). For vehicles that are received without an "Authorization for Recall Service" card, check the Vehicle Service Notification screen of the NDANET2 Warranty Claim System menu to verify if this safety recall is required.

PARTS INFORMATION

Each UD Truck Dealer will receive an advance shipment of parts to complete the repairs as described in this Safety Recall as follows:

Qty.	Description	Application
4	KSC05V2620 (revised as of 10/07/05)	1999 - 2002 MY UD1200 and UD1400
1	24110-29D00*	Batt. Cable (1999-2000 MY)
1	24110-29D01*	Batt. Cable (2001 - early production 2002)

Each KSC05V2620 kit includes the following items

Qty.	Part Number	Description
1	24270-36D0A	Protector Sleeve
1	24270-36D1A	Frame Cross Member Protector
3	01552-00043	Tie Strap

*Order additional cable as required as required for dealer inventory.

Additional Safety Recall Kits and Battery Cables are available immediately through the NDA Parts Operations Department. Dealers should base their parts order on the number of unsold/undelivered (new) vehicles and of retail delivered vehicles that appear on the computer listing.

SERVICE INFORMATION

Before servicing the vehicle, read the entire set of instructions first. Observe the following safety precautions to prevent personal injury, damage to property, or both:

- If the involved vehicle has a label on the inside of the driver's door as shown in Figure A, the recall has already been performed and no further action is required.
- If the involved vehicle does not have the label on the inside of the driver's door, verify through the Vehicle Service Notification screen of the NDANET2 system that the recall is required. Complete the safety recall according to the following instructions.



Figure A

- Park the vehicle on a flat surface, place the manual transmission in NEUTRAL (PARK for automatic transmission), set the parking brake and chock the rear wheels.
- Turn the engine off and allow the vehicle to cool before servicing.
- Isolate the batteries by disconnecting both negative and positive battery cables.

SERVICE PROCEDURE

Step 1

Inspect the Positive Battery Cable corrugated protective conduit for evidence of wear through or other damage at the rear transmission mounting bracket and the 3rd frame cross member.

Step 2A

If the battery cable is not damaged inspect the Positive Battery Cable for proper routing as illustrated in Figure A1 and A2. Re-route the cable correctly as necessary. Proceed to Step 3.

Step 2B

If the battery cable is damaged, replace the battery cable. See "Parts Information" cell chart for correct starter cable MY part number. Use the torque specifications for the battery cable found in the "Reference Section" of this recall. Proceed to Step 3.

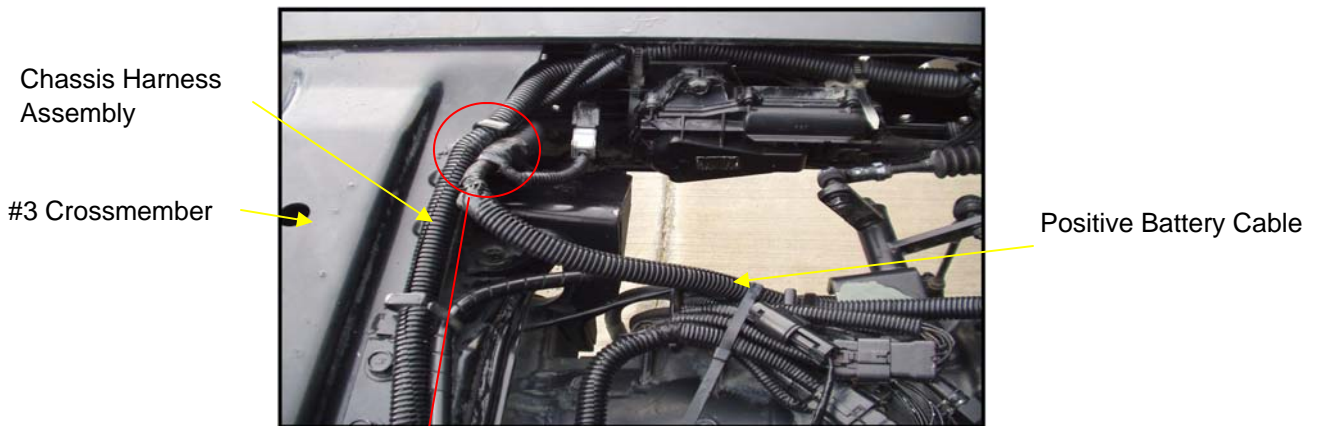


Figure A1 (1999 & 2000 MY)

Clamp the battery cable securely with the Chassis Harness to the cross member using the welded harness clip.

NOTE*: If the 3rd frame cross member is missing the welded retaining clip or is broken, use a Tie Strap PN 01552-00043 (from the Safety Recall Parts Kit) to secure the battery cable to the chassis harness as shown in Figure A2.

Front of vehicle

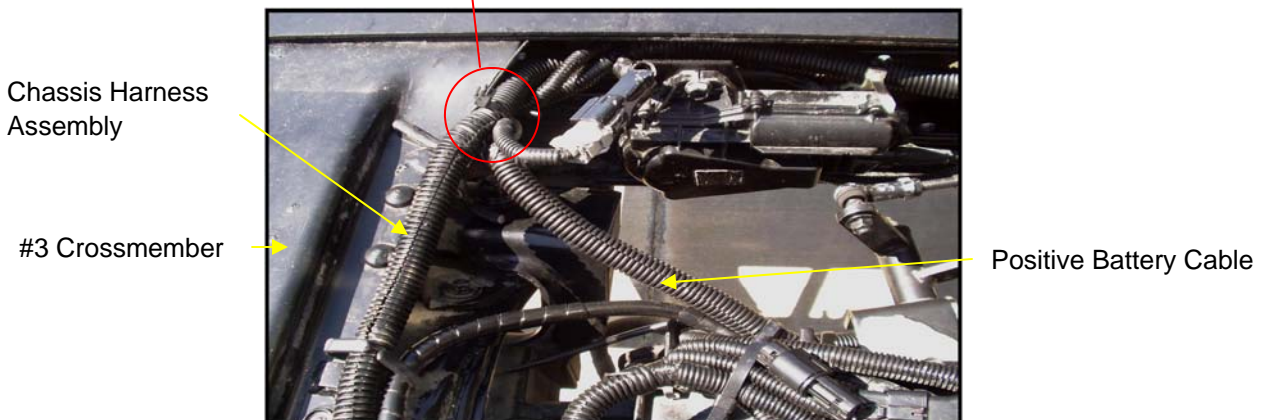
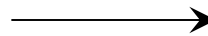


Figure A2 (2001 & 2002 MY)

SERVICE PROCEDURE (continued)

NOTE: Manual Transmission Models: Do not use the rear most retaining clip on the transmission shift cover to secure the battery cable, see Figure B.

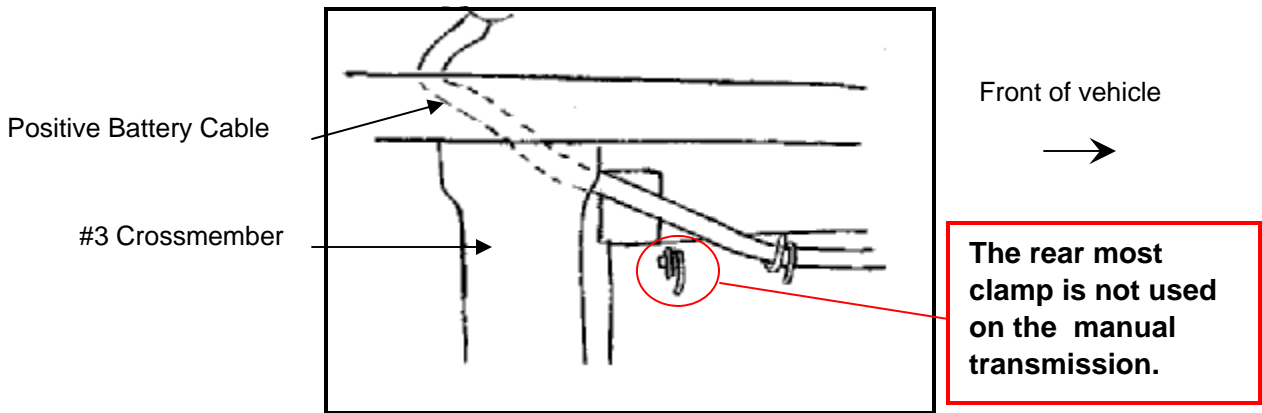


Figure B

Step 3

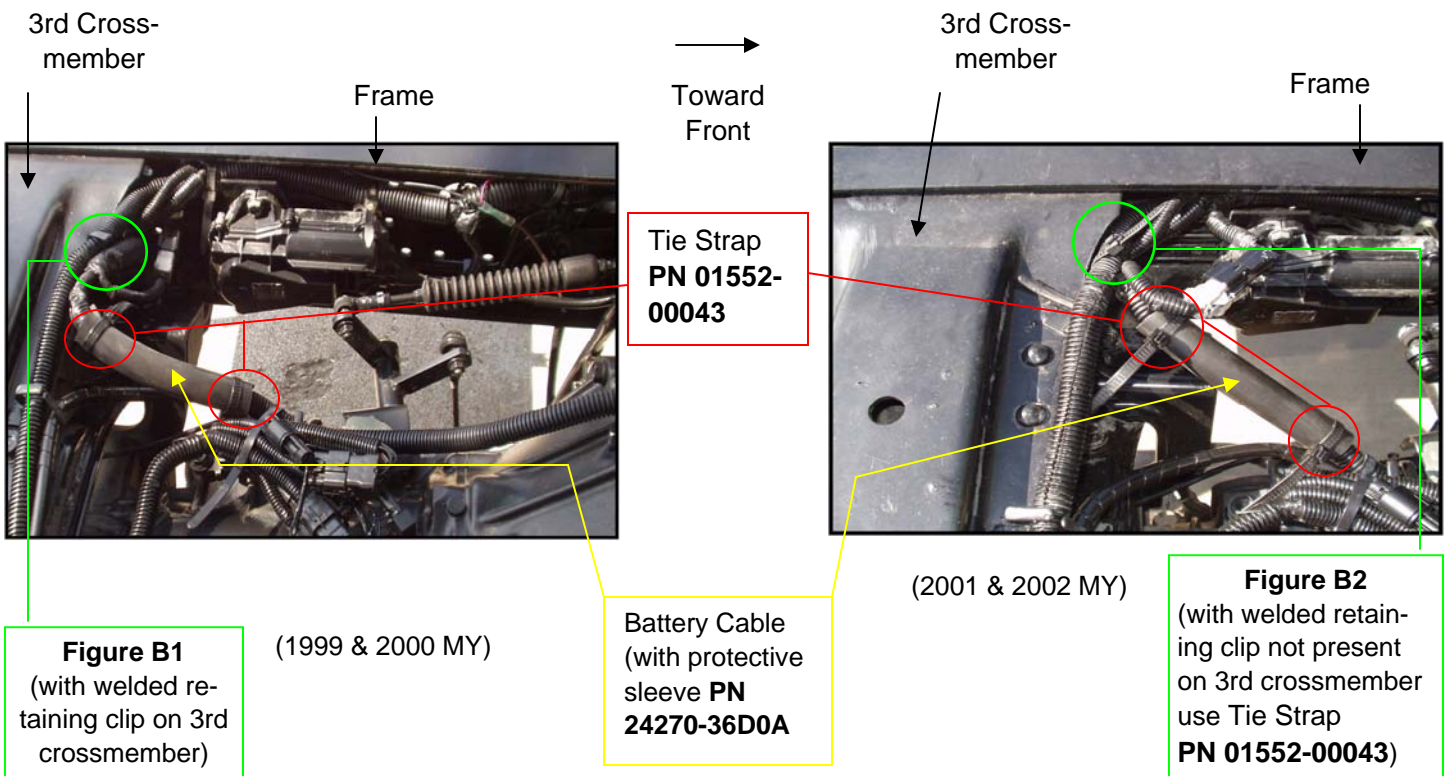
Install the battery cable Protective Sleeve **PN 24270-36D0A** from the Safety Recall **Parts Kit** around the battery cable.

Step 4a (Uses 2 tie straps)

Use 2 Tie Straps **PN 01552-00043** to secure the Protective Sleeve at each end as shown in Figure B1 if the welded retaining clip is present.

Step 4b (Uses 3 tie straps)

Use 2 Tie Straps **PN 01552-00043** to secure the Protective Sleeve at each end and a 3rd tie strap to secure the battery cable to the chassis harness at the crossmember as shown in Figure B2 if the welded retaining clip is not present.



SERVICE PROCEDURE (continued)

Step 5

Install the 3rd Frame Cross Member Protector **PN 24270-36D1A** as shown in Figure C.

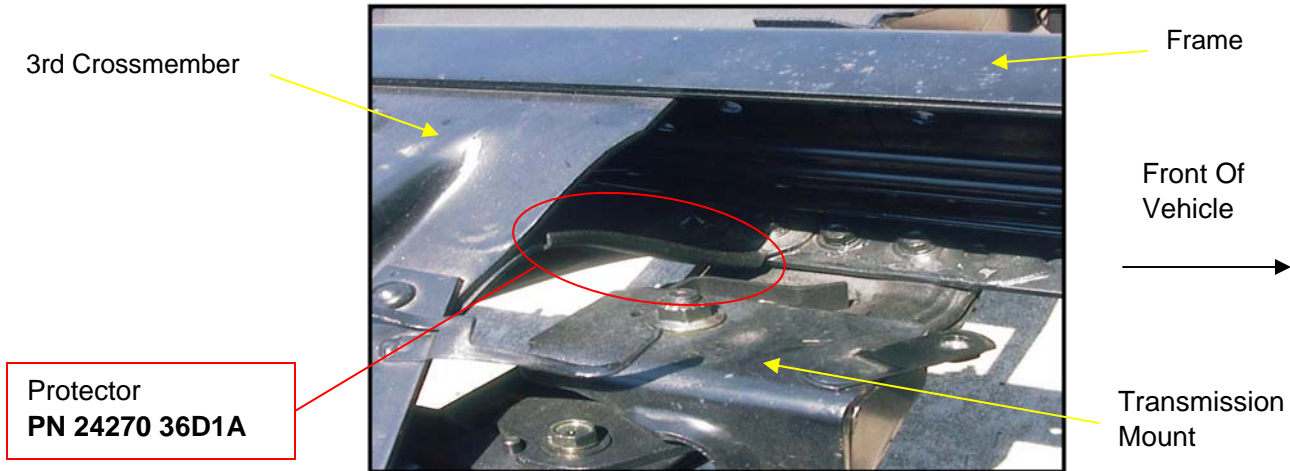


Figure C

Step 6

Reconnect the battery cables to battery using the torque specifications for the battery cable found at the References section of this bulletin. Start the vehicle to insure proper starter operation.

Step 7

The replaced starter cable should be cut in half and disposed of following local and state regulations.

Step 8

Record the completion date on the Safety Recall SC-262 sticker as shown in Figure D and apply it to the driver's side door post as shown in Figure A on page 3.



Figure D

References:

Torque settings

Batt. Cable to Starter End **B** Terminal 5.4~7.2 ft•lbs (0.75~1.0 kgf•m, 7.4~9.8 N•m)

Batt. Clamp to Batt. Post 3.8 ft • lbs (0.52 kgf•m, 5.1 N•m)

WARRANTY INFORMATION

Expenses for inspecting and/or replacing the battery cable as described in this Safety Recall are to be recovered through the standard UD Warranty Claim procedures listed in the UD Warranty Policies & Procedures Manual, Part V. Use the following information to prepare your claims:

WARRANTY CODE	K628
TROUBLE CODE	87700336
FAILED PART NUMBER	2411029D00
REPAIR DESCRIPTION	PERFORM SAFETY RECALL SC-262
LABOR OPERATION	877C
LABOR TIME ALLOWED	0.4 HRS/UNIT (INSPECT BATTERY CABLE, INSTALL HARNESS AND CROSSMEMBER PROTECTOR) 0.9 HRS/UNIT (REPLACE BATTERY CABLE, INSTALL HARNESS AND CROSSMEMBER PROTECTORS, INCLUDES BATTERY CABLE INSPECTION)