

TECHNICAL BULLETIN FC-03

DATE: JUNE 12, 2006
MODEL YEAR: 2005 AND AFTER
ENGINE MODEL: J05D-TA and J08E-TE
CHASSIS MODEL: UD1300 ~ UD3300
BULLETIN NUMBER: FC-03
FILE IN THE FUEL SECTION OF THE TECHNICAL BULLETIN BINDER

PROGRAMMING PTO FAST IDLE SETTING

PURPOSE

To issue the procedures for reprogramming the Engine ECU fast idle setting after installation of a PTO .

DESCRIPTION

This procedure is utilized for vehicles that do not require an external engine throttle control or a fast idle setting higher than 1800 RPM.

SERVICE PROCEDURE

- 2005 and 2006 MY - Engine ECU will require reprogramming utilizing a revised .rpr file downloaded from the UD Truck Service Operations website.
- 2007 MY and after - Proceed to Step 5 on page 2 of this bulletin.

Step 1

Print a copy of the PC Consult Work Order (Refer to the PC-Consult User's Guide, page 5 and pages 22 to 24 for details).

Step 2

Download the revised .rpr File (Refer to the PC-Consult User's Guide, page 26 for details).

Step 3

Reprogram the Engine ECU with the revised .rpr file (Refer to the PC-Consult User's Guide, pages 27 to 35 for details).

Step 4

Compare the Injector QR Codes with the printed copy of the PC Consult Work Order (See Step 1)

- Reprogram any QR code(s) that do not match. (Refer to the PC-Consult User's Guide, pages 18 and 19 for details).
- If all the QR codes match then proceed to Step 5 on page 2 of this bulletin.

Step 5

Set the fast idle speed for the PTO to the desired RPM's as shown below (Refer to the PC-Consult User's Guide page 18 for details).

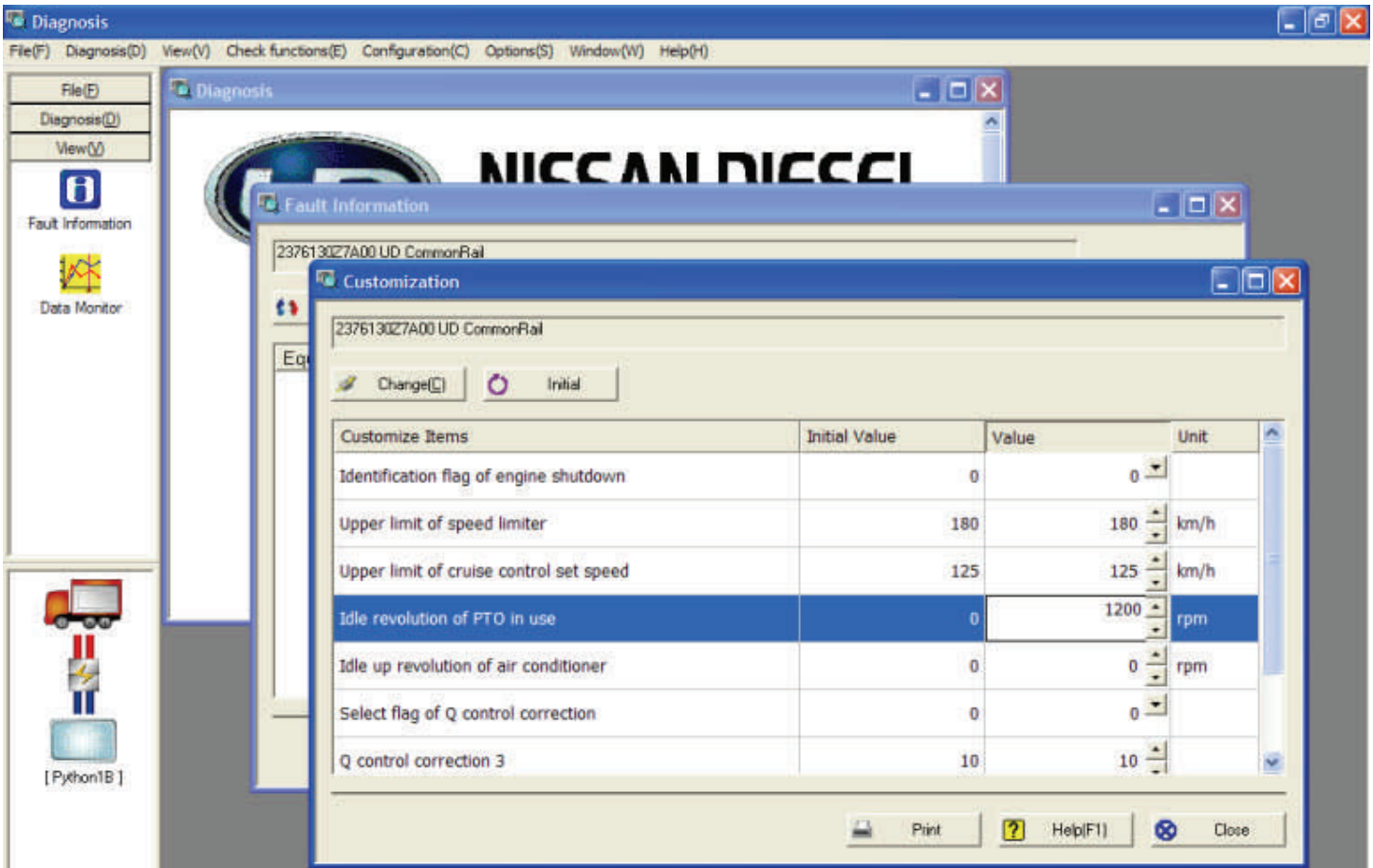


Fig. A

Step 6

Verify the fast idle operation with the PTO switch activation (Refer to the PC-Consult User's Guide page 7 to 10 for details).

| | | | | | | | |
|--|-----------------|---|------------------|---|------------------------------------|--|--|
| THE INFORMATION CONTAINED IN THIS BULLETIN SHOULD NOT BE INTERPRETED AS THE BASIS FOR WARRANTY CLAIMS | | | | | | | |
| FOR THE INDICATED PERSONNEL BELOW, PLEASE READ, INITIAL, AND ROUTE TO THE FOLLOWING: | | | | | | | |
| X | SERVICE MANAGER | X | WARRANTY MANAGER | X | SERVICE TECHNICIANS INITIAL BELOW: | | |
| X | PARTS MANAGER | X | SHOP FOREMAN | | | | |